

# The Game Changer ; season2



The world is changing day by day.

**SHINWOO TOOLS** leads you to the wide world stage in line with the flow of change.

Based on the management philosophy of creation, challenge, and trust, the passion and technology of **SHINWOO TOOLS** are with customers.



# AIR TOOL



## Lightweight Type Manual Air Edge Grinder

### Model No. SWT-0001N



Radius	Angle
R2	C2

- ☐ As an ultra-lightweight model, it is mainly used for nonferrous metal processing.
- ☐ Air ON / OFF opening / closing method using the handle.
- ☐ Suitable for small hole machining.
- ☐ With the rpm control function, it is possible to work according to the material of the metal.
- ☐ **Cutter No.**
  - Radius : DGRT161026P / • Angle : DGAT1610456P
- ☐ **Guide Bearing No.**
  - DMLB1012P

### ■ Specification

Motor	Maximum output		Coverage		Length	Weight	rotation speed	standard air pressure	
Air 1"	HP	W	Radius	Angle	mm	g	rpm	psi	Kgf/cm <sup>2</sup>
	0.2	200	R2	C2	130	495	30000	85	6

### Model No. SWT-0002N

#### Hit Product



Radius	Angle
R2~R3	C2~C3

- ☐ This ultra-lightweight model is mainly used for machining small holes or narrow areas.
- ☐ Air ON/OFF opening/closing method using a valve.
- ☐ **Cutter No.**
  - Radius : DGRT161026P / DGRT161036P
  - Angle : DGAT1610456P
- ☐ **Guide Bearing No.**
  - DMLB1012P

### ■ Specification

Motor	Maximum output		Coverage		Length	Weight	rotation speed	standard air pressure	
Air 2"	HP	W	Radius	Angle	mm	g	rpm	psi	Kgf/cm <sup>2</sup>
	0.4	300	R2~R3	C2~C3	155	850	22000	85	6

### ■ Work photo



## Narrow Type Manual Air Edge Grinder

### Model No. SWT-0004SX

Convenience and workability can be maximized when machining narrow and narrow holes up to a minimum of  $\varnothing 13$ .



Radius	Angle
R2~R3	C2~C3

- ☐ It is smaller in size and lighter in weight than similar models.
- ☐ The high rotation speed (11000 rpm) reduces fatigue.  
So, the advantage is that the work can be smoothly processed without difficulty as shown in the photo below.

- ☐ **Cutter No.**
  - Radius : DGRT161326 / DGRT161336
  - Angle : DGAT1613456
- ☐ **Guide Bearing No.**
  - DMLB13616P

### ■ Specification

Motor	Maximum output		Coverage		Length	Weight	rotation speed	standard air pressure	
Air 4"	HP	W	Radius	Angle	mm	g	rpm	psi	Kgf/cm <sup>2</sup>
	0.7	520	R2~R3	C2~C3	220	2265	11000	85	6

### Model No. SWT-0004



Radius	Angle
R2~R4	√

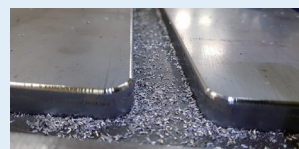
- ☐ Smaller in size and lighter in weight than comparable models.  
The high rotation speed (11000rpm) relieves operator fatigue and has the advantage of being able to smoothly process even in a narrow section as shown in the photo above.  
It is often used as a substitute for 7 inches.

- ☐ **Cutter No.**
  - Radius : DGRT271927/ DGRT271937  
DGRT271947
- ☐ **Guide Bearing No.**
  - DMLB19819 / DBLT19819

### ■ Specification

Motor	Maximum output		Coverage		Length	Weight	rotation speed	standard air pressure	
Air 4"	HP	W	Radius	Angle	mm	g	rpm	psi	Kgf/cm <sup>2</sup>
	0.7	520	R2~R4	√	245	2355	11000	85	6

### ■ Work photo (SAW-0004SX)



## Narrow Type Manual Air Edge Grinder

Model No. SWT-0004(H)

### Hit Product



Radius	Angle
R2~R4	√

- ☐ Smaller in size and lighter in weight than comparable models.  
The high rotational speed (11000rpm) has the advantage of reducing operator fatigue and enabling smooth machining even in narrow sections, as shown in the figure below.  
As shown in the figure below, it is mainly used instead of the rotary bar when the work is not smooth due to the interference part.

- ☐ Cutter No.
  - Radius : DGRT271927 / DGRT271937  
DGRT271947
- ☐ Guide Bearing No.
  - DMLB19819 / DMLT19819

- ☐ When the work is difficult due to the interference part, the work time is minimized and the You can experience cutting quality.

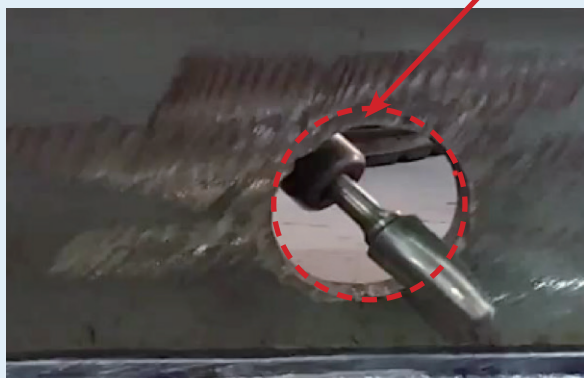
### ■ Specification

Motor	Maximum output		Coverage		Length	Weight	rotation speed	standard air pressure	
	HP	W	Radius	Angle	mm	g	rpm	psi	Kgf/cm <sup>2</sup>
Air 4"	0.7	520	R2~R4	√	220	2130	11000	85	6

### ■ Work photo

#### Improved working method of SWT-0004(H)

Due to the interference part, the working time of the rotary bar is long and the quality of the machined surface is poor.



[Existing form of work]

because of interference Suitable for difficult working environments

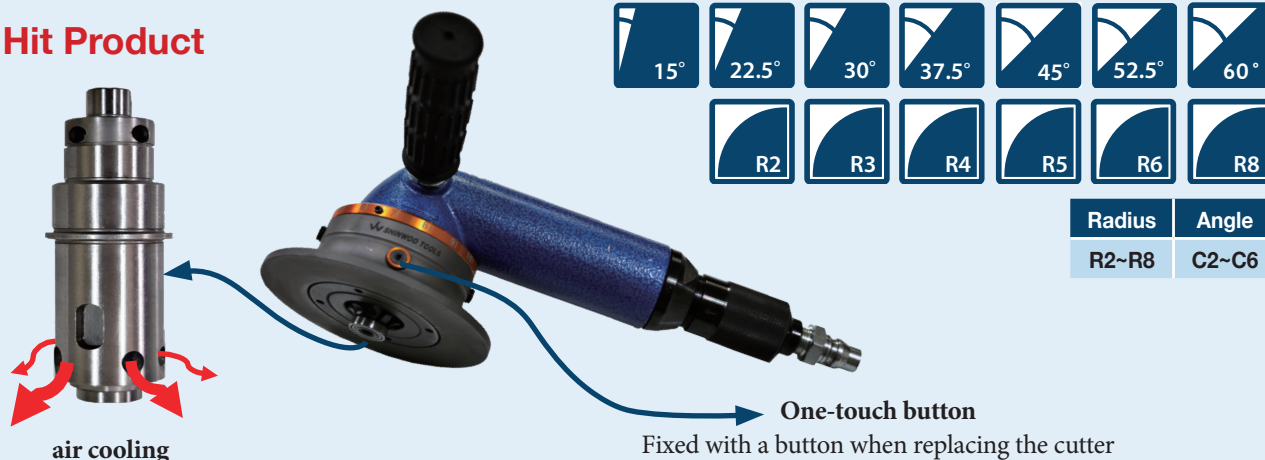


[Improved way of working ]

## Special Type Manual Air Edge Grinder

Model No. SWT-0007N

### Hit Product



- ☐ Currently, it is the most preferred and widely used product by shipyards and steel plate processing companies. As a lightweight 7-inch air beveler, it is light in weight, so it can be said that it can be processed smoothly for a long time without effort
- ☐ Air ON / OFF opening / closing method using the handle
- ☐ **By cooling the cutter by air cooling without cutting oil, it increases durability and improves work efficiency.**
- ☐ **Cutter No.**
  - Radius : DGRT271927P / DGRT271937P / DGRT271947P / DGRT271957P / DGRT3521610P / DGRT3821812P
  - Angle : DGAT2219A158P / DGAT2419A228P / DGAT3019A308P / DGAT3019A378P / DGAT3319A458P / DGAT3019A528P / DGAT3019A608P
- ☐ **Guide Bearing No.**
  - DMLB19822A

### ■ Specification

Motor	Maximum output		Coverage		Length	Weight	rotation speed	standard air pressure	
	HP	W	Radius	Angle	mm	g	rpm	psi	Kgf/cm <sup>2</sup>
Air 7"	1.3	970	R2~R8	C2~C7	270	3145	7500	85	6

### ■ Work photo






New Type  
Manual Air Edge Grinder

Model No. SWT-0007(U)

Hit Product



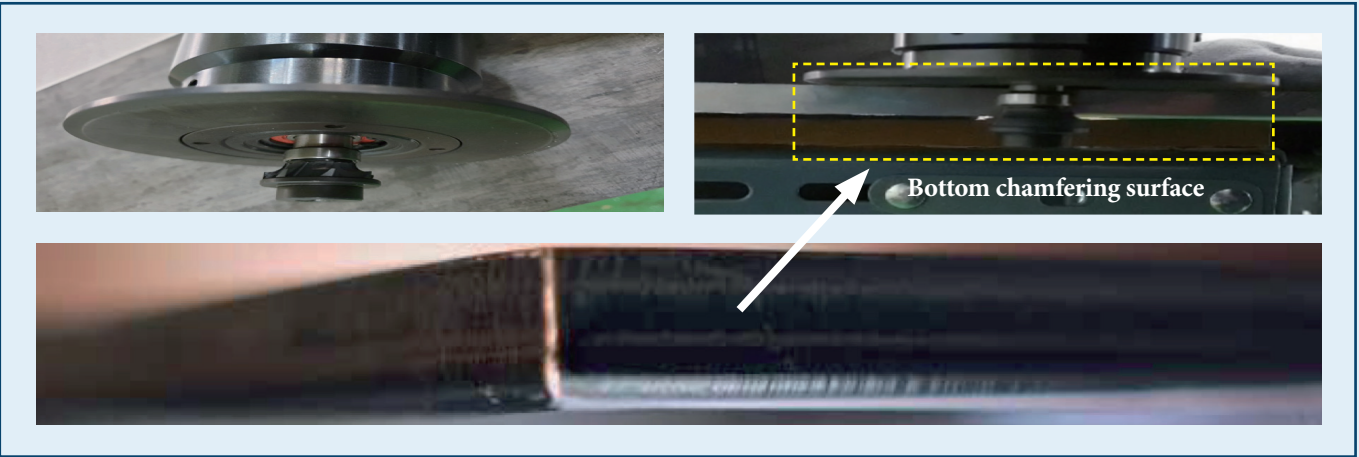
		
Radius	Angle	
R2~R5	√	

- It is a 7-inch chamfering machine that can chamfer the lower surface without turning over the long shaft member.  
It is a lightweight 7-inch air chamfer that can be processed smoothly for a long time without effort because it is light in weight.
- Air ON / OFF opening / closing method using the handle.
- **It is safe from the risk of accidents and maximizes the efficiency of work by reducing the time.**
- **Cutter No.**
  - Radius : DGRT271937P / DGRT271947P / DGRT271957P
- **Guide Bearing No.**
  - Bearing 6800 / Washer / Bolt / Ring (1set)

■ Specification

Motor	Maximum output		Coverage		Length	Weight	rotation speed	standard air pressure	
	HP	W	Radius	Angle				psi	Kgf/cm <sup>2</sup>
Air 7"	1.3	970	R2~R5	√	270	4200	7500	85	6

■ Work photo



## Special Type Air Auto Edge Milling M/C

Model No. SWT-AC18N



Radius	Angle
R2~R8	C2~C6

### Hit Product

Manhole, curved, vertical and side workable

- ☐ It is an automatic equipment that mainly improves the corners of long shaft members and rounds them.
- ☐ After finishing the edge processing of the steel plate, the operation is automatically stopped by the limit sense without any separate operation by the operator.
- ☐ The shaft height adjustment valve and magnetic height adjustment valve ensure the durability of the consumables.
- ☐ Compared to the manual beveling machine, the durability of the cutter lasts longer.
- ☐ **Cutter No.**
  - Radius : DGRT271927P / DGRT271937P / DGRT271947P / DGRT271957P / DGRT3521610P / DGRT3821812P
  - Angle : DGAT2219A158P / DGAT2419A228P / DGAT3019A308P / DGAT3019A378P / DGAT3319A458P / DGAT3019A528P / DGAT3019A608P
- ☐ **Guide Bearing No.**
  - DMLB19822A / DMLB19818P / DMLT19818P / DMLB22822 (R6,R8)

### ■ Specification

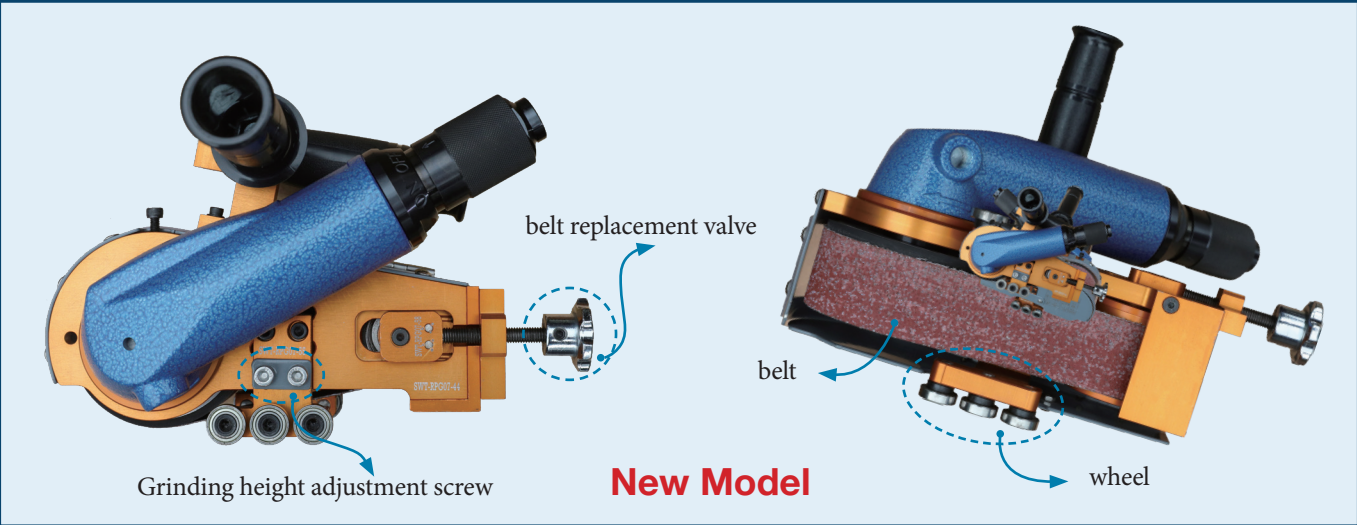
Motor	Maximum output		Coverage		Length	Weight	rotation speed	standard air pressure	
Air 4"	HP	W	Radius	Angle	mm	g	rpm	psi	Kgf/cm <sup>2</sup>
	0.7	520	R2~R8	C2~C6	200×220×310	12000	7500	85	6

### ■ Work photo



Innovative New Product  
Air Roll Paper Grinder

Model No. SWT-RPG07

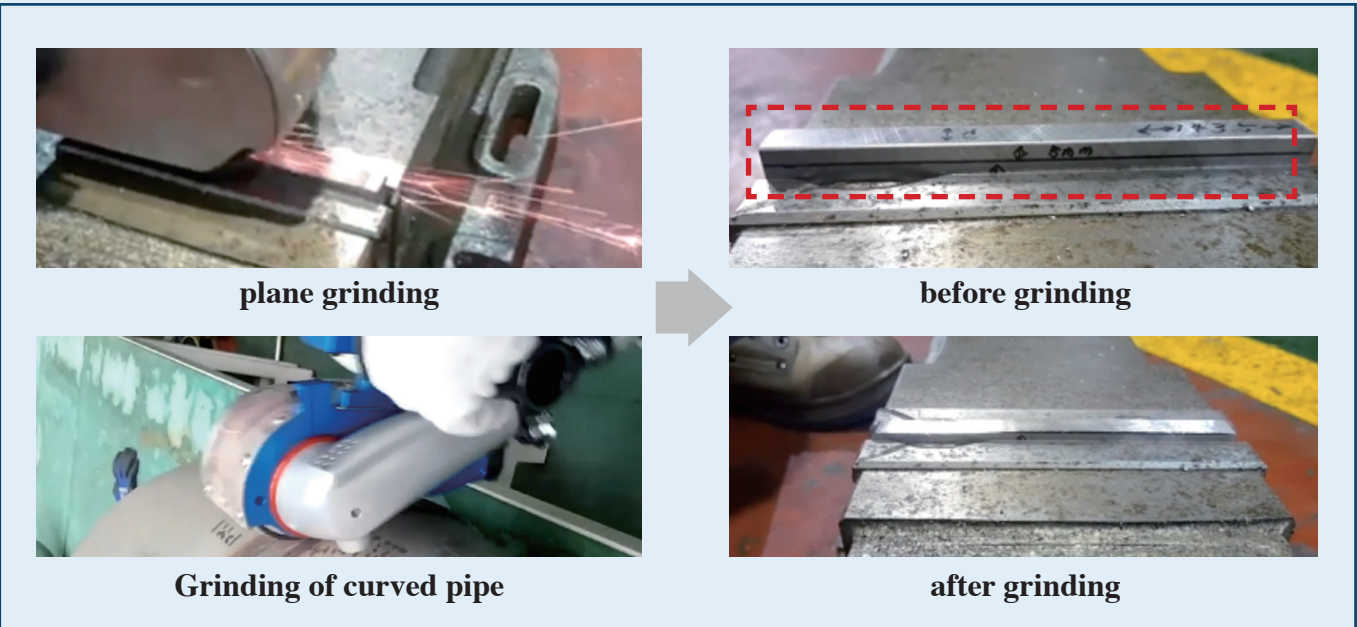


- It is mainly used for welding bead removal and is effectively applied to flat and curved surfaces.
- It boasts excellent quality as well as labor cost savings and fast work speed.
- It can be said that it is a top-notch product that is widely used not only in the domestic market but also in the global market.
- ROLL PAPER BELT is a specially manufactured product of 3M, and it is excellent in terms of durability. Applicable materials are variously applied such as SUS, STEEL, and ALU.

■ Specification

Motor	Maximum output		Belt		Length	Weight	rotation speed	standard air pressure	
	HP	W	width	length	mm	g	rpm	psi	Kgf/cm <sup>2</sup>
Air 7"	1.3	520	40		300×195×170	3700	7500	85	6

■ Work photo





# ELECTRIC TOOL



## Universal Type Manual Electric Edge Grinder

### Model No. SWT-0004JME



- ☐ Mainly used at work sites where air supply is not smooth.
- ☐ Compared to air tools, electric tools are not suitable for long-term use, although their output is higher.
- ☐ **Cutter No.**
  - Radius : DGRT271927P / DGRT271937P / DGRT271947P / DGRT271957P
- ☐ **Guide Bearing No.**
  - DMLB19819P / DMLT19819P

### ■ Specification

Motor	Maximum output		Coverage		Length	Weight	rotation speed
Electric 4"	Volt	W	Radius	Angle	mm	g	rpm
	220	720	R2~R5	√	290	2615	11000

### Model No. SWT-0004BE

#### Two types of shafts

- Ø9
- Ø12

Shaft at the time of purchase  
Specifications must be stated



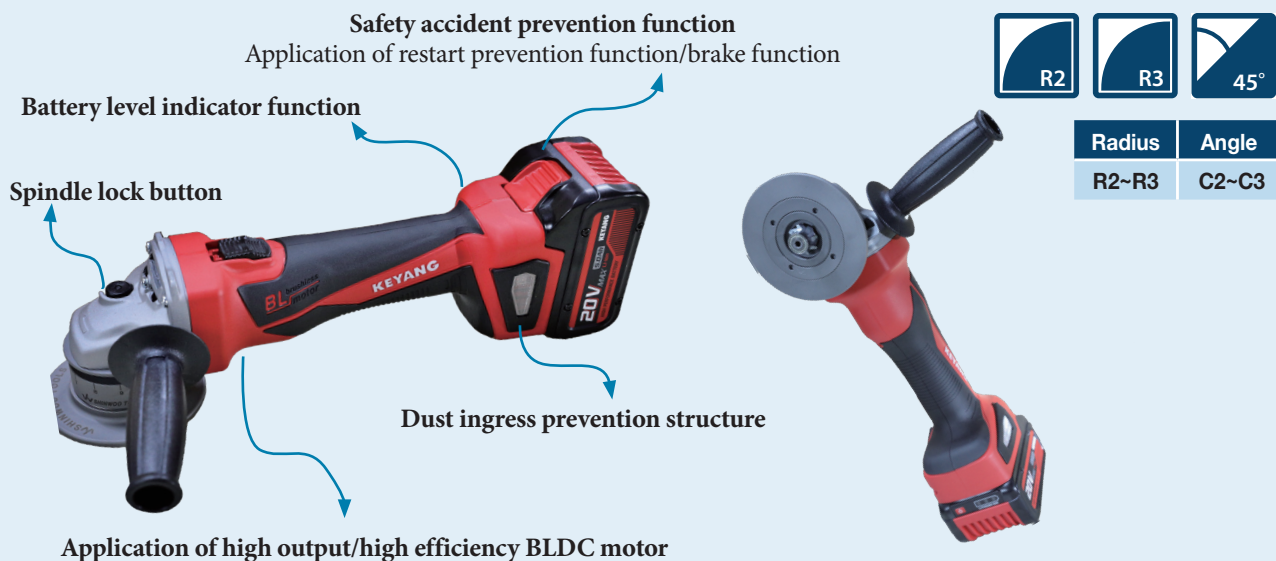
- ☐ It has an rpm control function, so it can be used according to the material of the member.
- ☐ **Cutter No.**
  - Radius : DGRT271927P / DGRT271937P / DGRT271947P / DGRT271957P / DGRT3521610P / DGRT3821812P
  - Angle : DGAT1714156P / DGAT1814226P / DGAT2214306P / DGAT2214376P / DGAT2214456P / DGAT2214526P / DGAT2214606P / For use on Ø9 shafts : DGRT191426 / DGRT191436
- ☐ **Guide Bearing No.**
  - DMLB19822 / DMLT19819 / DMLB14616(For use on Ø9 shafts)

### ■ Specification

Motor	Maximum output		Coverage		Length	Weight	rotation speed
Electric 4"	Volt	W	Radius	Angle	mm	g	rpm
	220	720	R2~R5	C2~C3	305	2555	2800~11000

## Narrow Type Manual Air Edge Grinder

**Model No. SWT-EK04-100S**

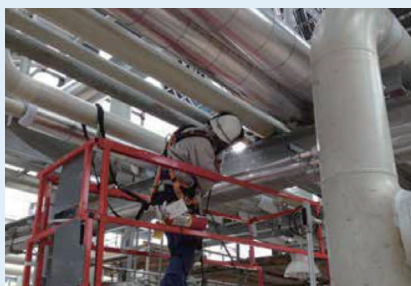


- ☐ It is convenient to apply to sites where access to electric and pneumatic lines is not easy due to many structural obstacles on the job site.
- ☐ High-output / high-efficiency BLDC motor is applied, so it has excellent output and does not generate much heat even after using it for a long time.
- ☐ Restart Protection: Does not work when the battery is installed while the switch is on.
- ☐ An ergonomic grip design and non-slip rubber are applied.(It does not get tired even after using it for a long time.)
- ☐ **Cutter No.**
  - Radius : DGRT161026P / DGRT161036P
  - Angle : DGAT1610456P
- ☐ **Guide Bearing No.**
  - DMLB1012P

### Work photo



pipe structure work area



small area with many obstacle



When working on small ships

### Specification

Motor	Maximum output		Coverage		Length	Weight	rotation speed
Electric 4"	Li-ion	W	Radius	Angle	mm	g	rpm
	5.0.6.0/5.0Ah	650	R6~R8	C2~C11	320	2500	8500

Special Type  
Manual Electric Edge Grinder

Model No. SWT-0005ME



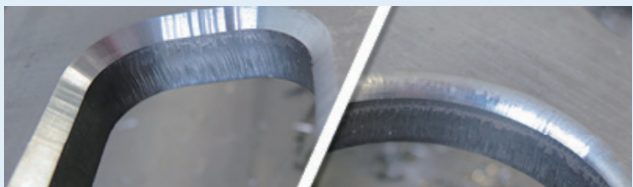
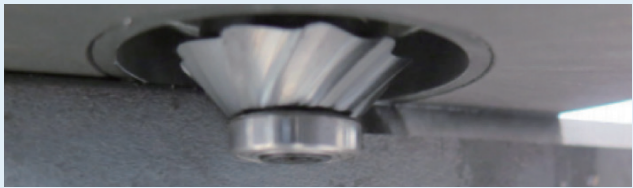
Radius	Angle
R6~R8	C2~C11

- It is a power tool that boasts a strong output and is recommended for chamfering the edges of steel plates.
- The safety handle and stable grip specialized for chamfering reduce operator fatigue and realize the highest quality of work.
- Since the scale is finely marked on the height adjustment head, the operator can easily adjust the cutting amount as much as he wants.
- Since it has a function to adjust the spindle rpm, it can be used by adjusting it according to the material of the member, and it can be used in various ways, including radius cutters (R6~R8) and angle cutters (C2~C11).
- **Cutter No.**
  - Radius : DGRT3521610P / DGRT3821812P
  - Angle : DGAT2219A158P / DGAT2419A228P / DGAT3019A308P / DGAT3019A378P / DGAT3319A458P / DGAT3019A528P / DGAT3019A608P (Max 8mm)  
DGAT2519B1512 / DGAT2819B2212 / DGAT3619B3012 / DGAT3619B3712 / DGAT4119B4512 / DGAT3619B5212 / DGAT3619B6012 (Max 12mm)
- **Guide Bearing No.**
  - DMLB19822A / DMLB19827B / DMLB21825

■ Specification

Motor	Maximum output		Coverage		Length	Weight	rotation speed
Electric 5"	Volt	W	Radius	Angle	mm	g	rpm
	220	1750	R2~R8	C2~C11	430	4440	Min 2800~Max 11000

■ Work photo





## BEVEL HEAD INTRODUCTION

Please note when ordering CUTTER



Key Type



Polygon Type

## Bevel head (Max 6mm)



Type	Code No.	DGAT 171456	DGAT 171456A

Type	Code No.	DGAT 1814226	DGAT 171456A

Type	Code No.	DGAT 2214306	DGAT 2214306A

Type	Code No.	DGAT 2214376	DGAT 2214376A

Type	Code No.	DGAT 2214456	DGAT 2214456A

## Bevel head (Max 6mm)



Type	Code No.	DGAT 2214526	DGAT 2214526A

Type	Code No.	DGAT 2214606	DGAT 2214606A

Type	Code No.	DGRT 191426	DGRT 191426A

Type	Code No.	DGRT 191436	DGRT 191436A

Type	Code No.	DGRT 191446	DGRT 191446A

## Bevel head (Max 8mm)



Type	Code No.	DGAT 2219A158	DGAT 2219A158A

Type	Code No.	DGAT 2419A228	DGAT 2419A228A

Type	Code No.	DGAT 3019A308	DGAT 3019A308A

Type	Code No.	DGAT 3019A378	DGAT 3019A378A

Type	Code No.	DGAT 3319A458	DGAT 3319A458A

## Bevel head (Max 8mm)



		
Type	Code No.	Code No.
	DGAT 3019A528	DGAT 3019A528A

		
Type	Code No.	Code No.
	DGAT 3019A608	DGAT 3019A608A

		
Type	Code No.	Code No.
	DGRT 271927	DGRT 271927A

		
Type	Code No.	Code No.
	DGRT 271937	DGRT 271937A

		
Type	Code No.	Code No.
	DGRT 271947	DGRT 271947A

## Bevel head (Max 12mm)



Type	Code No.	DGAT 2519B1512	DGAT 2519B1512A

Type	Code No.	DGAT 2819B2212	DGAT 2819B2212A

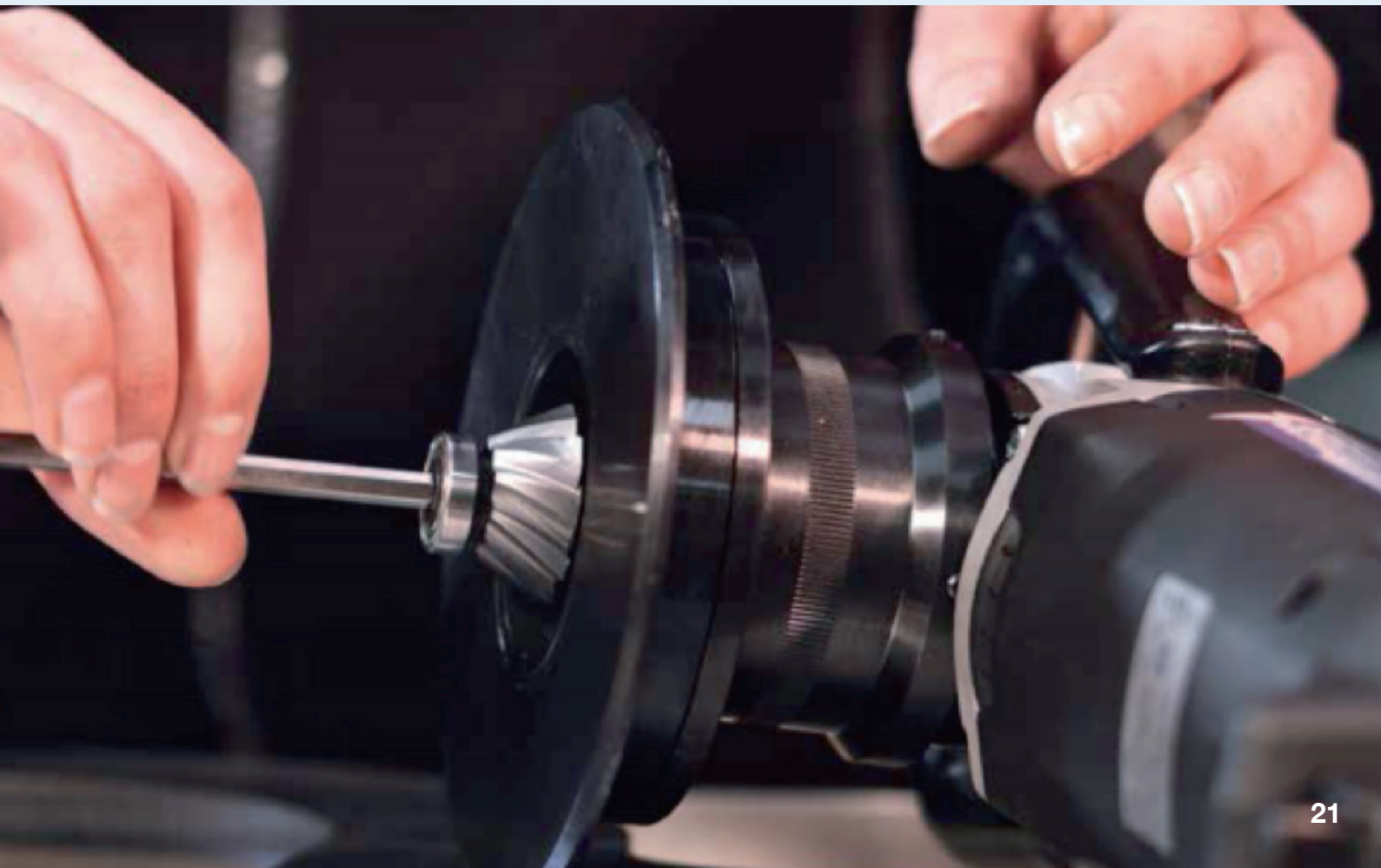
Type	Code No.	DGAT 3619B3012	DGAT 3619B3012A

Type	Code No.	DGAT 3619B3712	DGAT 3619B3712A

Type	Code No.	DGAT 4119B4512	DGAT 4119B4512A

Bevel head (Max 12mm)

			
			
Type	Code No.	DGAT 3619B5212	DGAT 3619B5212A
			
Type	Code No.	DGAT 3619B6012	DGAT 3619B6012A





**SHINWOO PRECISION CO.,LTD**

22, Ansirye-gil, Buk-gu, Ulsan, Republic of Korea

TEL: +82-52-227-0985~6 FAX : +82-52-227-0984

<http://www.shinwoo-tools.com>